

1604 Berry Street, Santa Fe, NM



Highlights:

- ✓ Off Street Parking
- ✓ C-2 Uses
- ✓ Upper and Lower Level
- ✓ Office Improvements
- ✓ 5,006 +/- Sq. Ft. Bldg.
- ✓ 6,490 +/- Sq. Ft. Lot

FOR

SALE \$499,000

CERRILLOS ROAD AND 2ND STREET AREA

An excellent choice near downtown Santa Fe and State Government Buildings. C-2 uses includes vocational school, governmental offices, human services, financial services, professional offices, personal services.

www.phaseonerealty.com

For more information and to arrange a tour, contact:

PHASE ONE REALTY
COMMERCIAL REAL ESTATE SERVICES

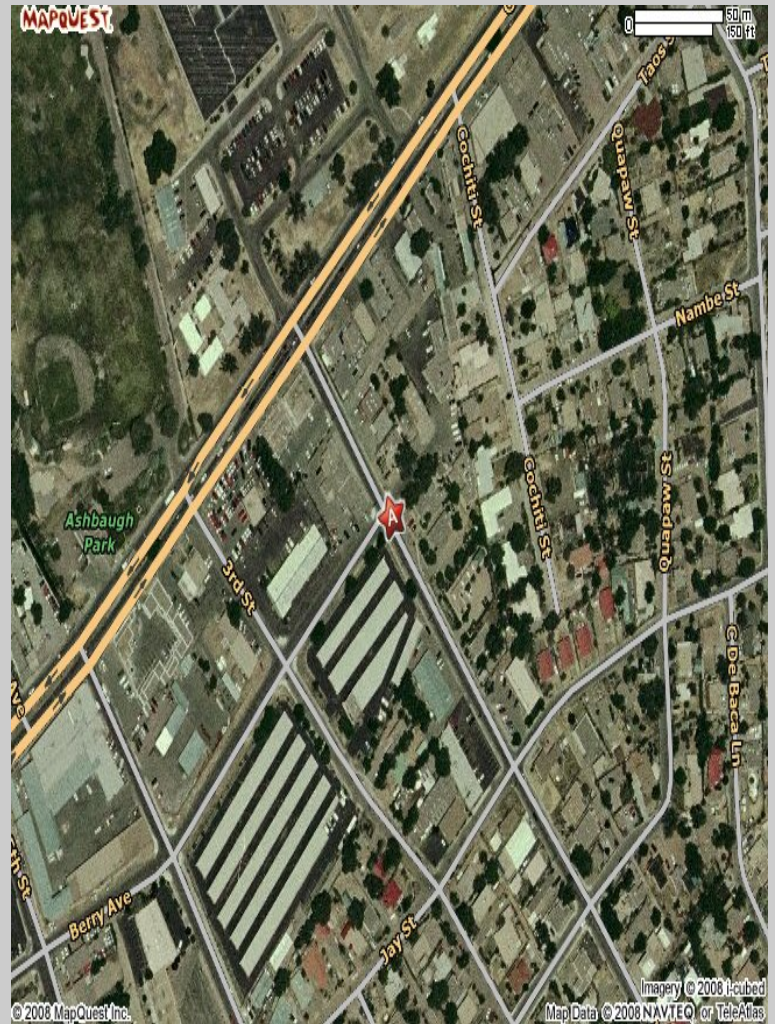
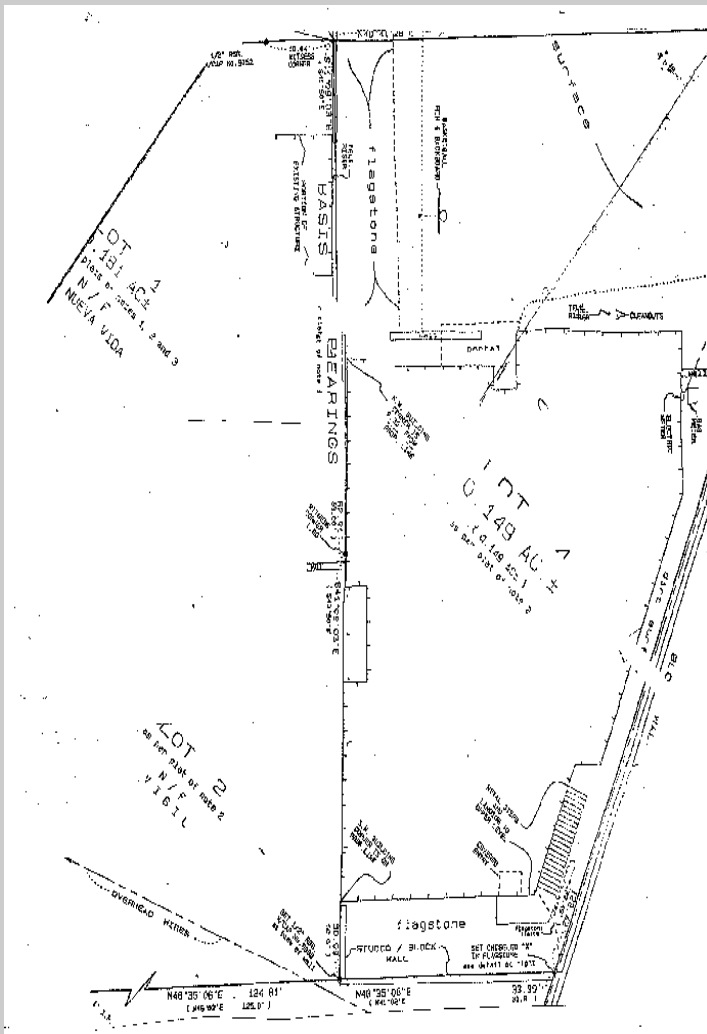
Phase One Realty, Inc.
2011 Botolph Road, Ste. 100
P.O. Box 22865
Santa Fe, NM 87502
Office (505) 988-3883
FAX (505) 988-5134
www.phaseonerealty.com

Jim Metheny
Direct 986-2941
jim@phaseonerealty.com

David Gurule
Direct 986-2939
dave@phaseonerealty.com

Valerie Gonzales
Direct 986-2939
val@phaseonerealty.com

1604 Berry Street, Santa Fe, NM



SITE PLAN, AERIAL

PHASE ONE REALTY
COMMERCIAL REAL ESTATE SERVICES

Phase One Realty, Inc.
2011 Botolph Road, Ste. 100
P.O. Box 22865
Santa Fe, NM 87502
Office (505) 988-3883
FAX (505) 988-5134
www.phaseonerealty.com

Jim Metheny
Direct 986-2941
jim@phaseonerealty.com

David Gurule
Direct 986-2939
dave@phaseonerealty.com

Valerie Gonzales
Direct 986-2939
val@phaseonerealty.com