

827 Camino de Monte Rey, S. Capitol O/Whse!



LEASE



Highlights:

- ✓ Between Pacheco Street and S. St. Francis Drive
- ✓ Off Street Parking, fenced outside storage
- ✓ Open space warehouse/distribution
- ✓ Drive through space
- ✓ Desirable South Capitol location near State of NM Buildings
- ✓ Rare Santa Fe M-1 Zoning
- ✓ +/- 9,258 sq. ft., \$7,600 per month plus utilities and CAM

For more information and to arrange a tour, contact:

PHASE ONE REALTY
COMMERCIAL REAL ESTATE SERVICES

Phase One Realty, Inc.
2011 Botolph Road, Ste. 100
P.O. Box 22865
Santa Fe, NM 87502
Office (505) 988-3883
FAX (505) 988-5134
www.phaseonerealty.com

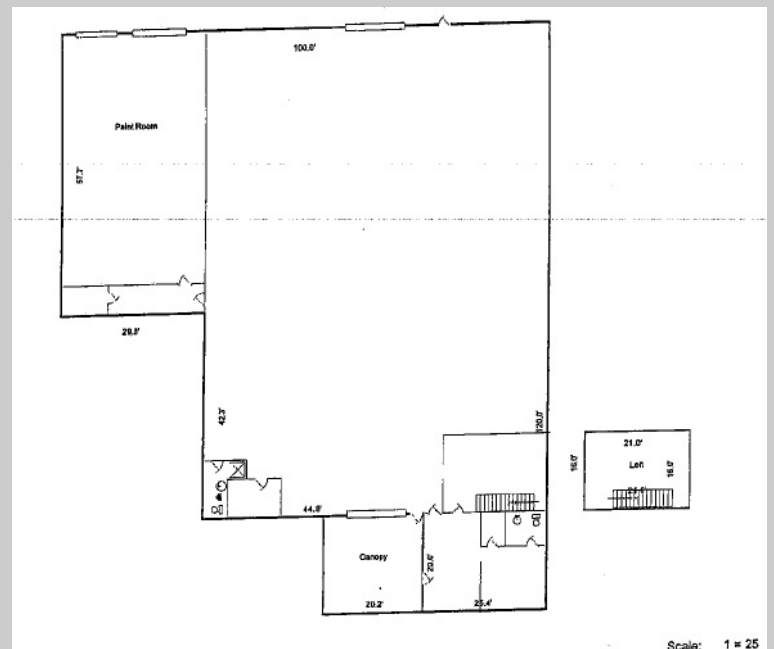
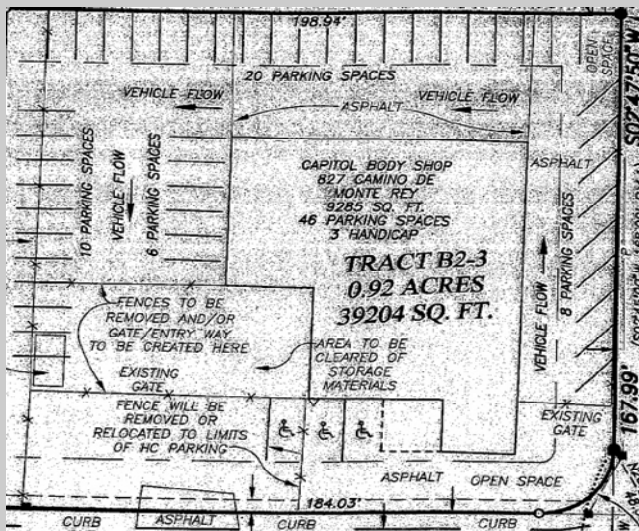
Jim Metheny

Direct 986-2941

jim@phaseonerealty.com



827 Camino de Monte Rey, S. Capitol O/Whse!



SITE AND FLOOR PLAN

PHASE ONE REALTY
COMMERCIAL REAL ESTATE SERVICES

Phase One Realty, Inc.
2011 Botolph Road, Ste. 100
P.O. Box 22865
Santa Fe, NM 87502
Office (505) 988-3883
FAX (505) 988-5134
www.phaseonerealty.com

Jim Metheny

Direct 986-2941

jim@phaseonerealty.com