

# 3520 Camino Jalisco, Santa Fe, NM



## Highlights:

- ✓ Off Street Parking
- ✓ County R-1 Uses
- ✓ 2,720 +/- Sq. Ft. Bldg.
- ✓ 1.47 +/- Ac. Lot
- ✓ Immediate Occupancy
- ✓ For Lease \$1,800.00/mo.

**FOR**

**SALE \$475,000**

RICHARDS ROAD AND COMMUNITY COLLEGE AREA

### Growing

area. County R-1 uses includes single family residential, group homes. This property ideal for large family or home office applications. Must see the property to appreciate the potential.

[www.phaseonerealty.com](http://www.phaseonerealty.com)

For more information and to arrange a tour, contact:

**PHASE ONE REALTY**  
COMMERCIAL REAL ESTATE SERVICES

Phase One Realty, Inc.  
2011 Botolph Road, Ste. 100  
P.O. Box 22865  
Santa Fe, NM 87502  
Office (505) 988-3883  
FAX (505) 988-5134  
[www.phaseonerealty.com](http://www.phaseonerealty.com)

Jim Metheny  
Direct 986-2941

[jim@phaseonerealty.com](mailto:jim@phaseonerealty.com)

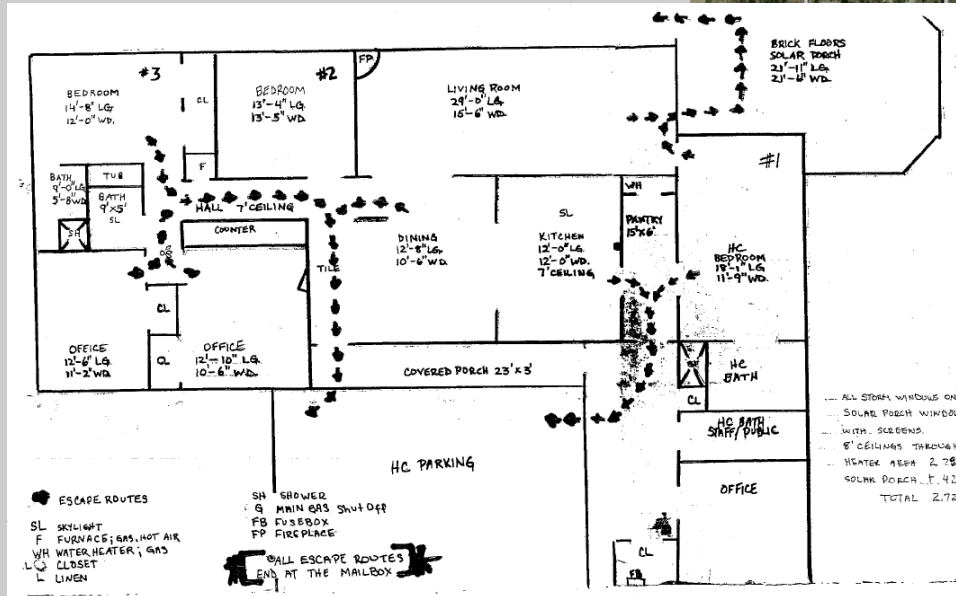
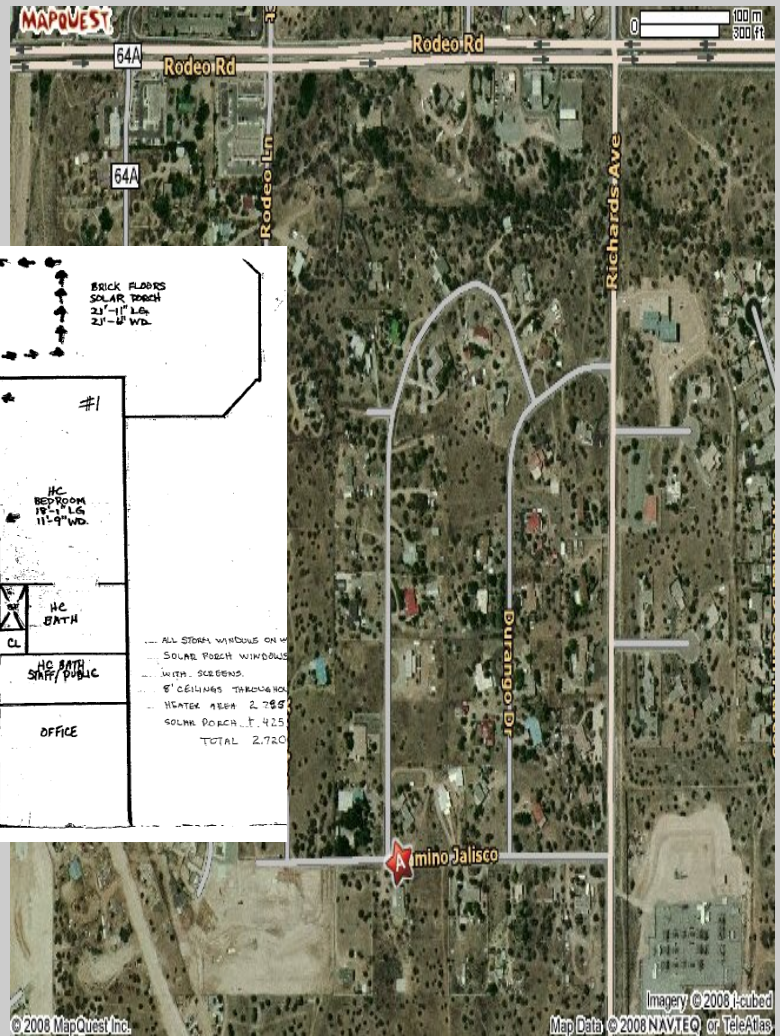
David Gurule  
Direct 986-2939

[dave@phaseonerealty.com](mailto:dave@phaseonerealty.com)

Valerie Gonzales  
Direct 986-2939

[val@phaseonerealty.com](mailto:val@phaseonerealty.com)

# 3520 Camino Jalisco, Santa Fe, NM



## SKETCH PLAN, AERIAL

**PHASE ONE REALTY**  
COMMERCIAL REAL ESTATE SERVICES

Phase One Realty, Inc.  
2011 Botolph Road, Ste. 100  
P.O. Box 22865  
Santa Fe, NM 87502  
Office (505) 988-3883  
FAX (505) 988-5134  
www.phaseonerealty.com

Jim Metheny  
Direct 986-2941  
jim@phaseonerealty.com

David Gurule  
Direct 986-2939  
dave@phaseonerealty.com

Valerie Gonzales  
Direct 986-2939  
val@phaseonerealty.com